

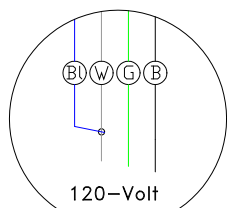
LIGHT RECP.
"WHITE 2-PIN" AMP

SYSTEM MIS-WIRE

RED INDICATOR LIGHT

HIGH-LIMIT TRIPPED

RED INDICATOR LIGHT



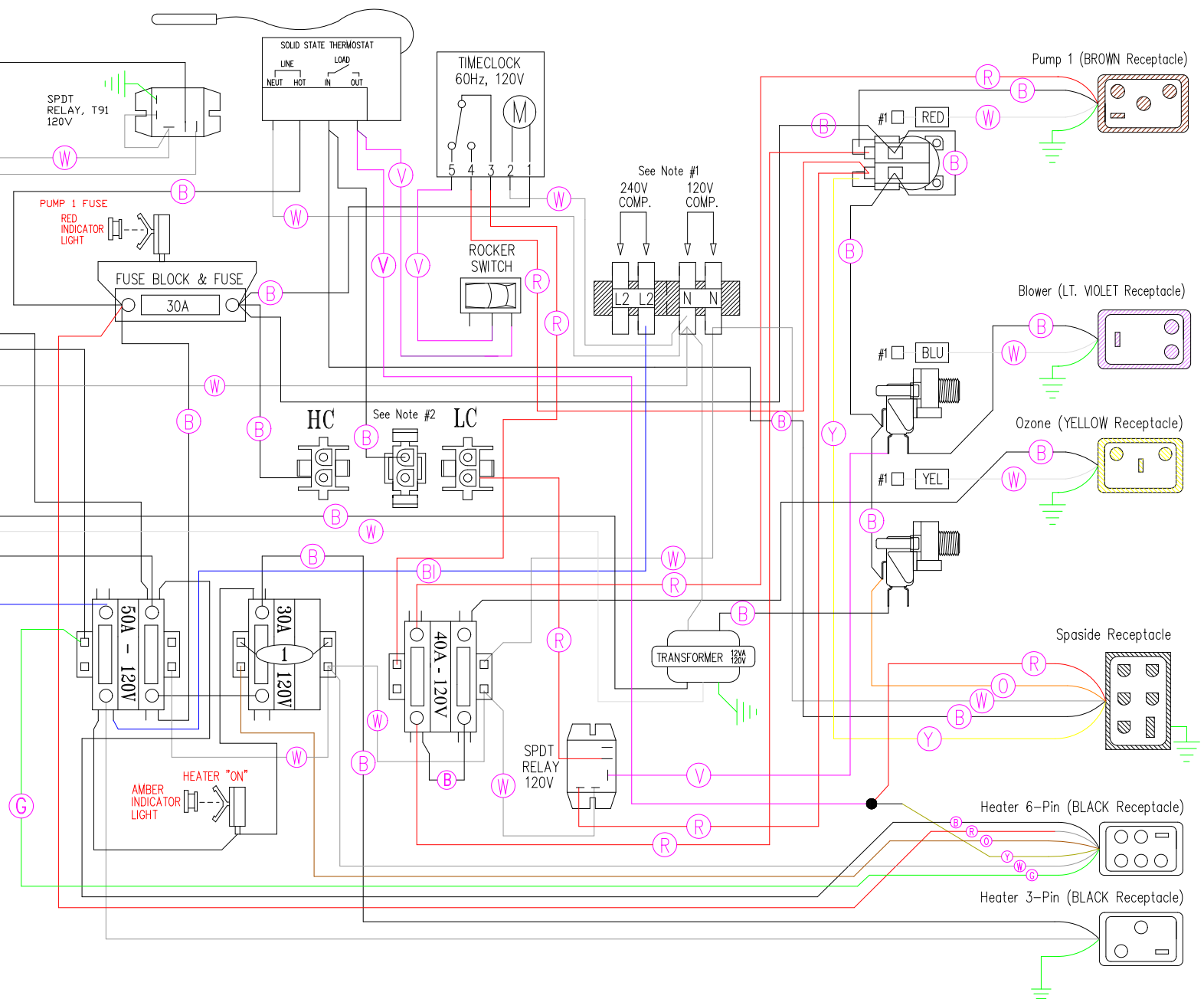
Line 2 & Neutral must be connected for 120V input.

LINE 1

LINE 2

NEUTRAL

GROUND



HYDRO QUIP
CORONA, CA (909) 273-7575

Dwg. No.
506G0-DKS5

Drawn MBS
Date 07.24.07

Rev 1

Wire Color Code

Manufacture Notes: #1 - Universal System, connecting the White/Component receptacle wire to the corresponding position on the Universal Terminal Block determines component voltage.

#2 - Low Current (heater off w/high-speed pump or blower) or High Current (no heater restriction)

Diagram No. 7502D

B - Black G - Green
Br - Brown Bl - Blue
R - Red V - Violet
O - Orange W - White
Y - Yellow Gr - Gray